



University of  
South Australia

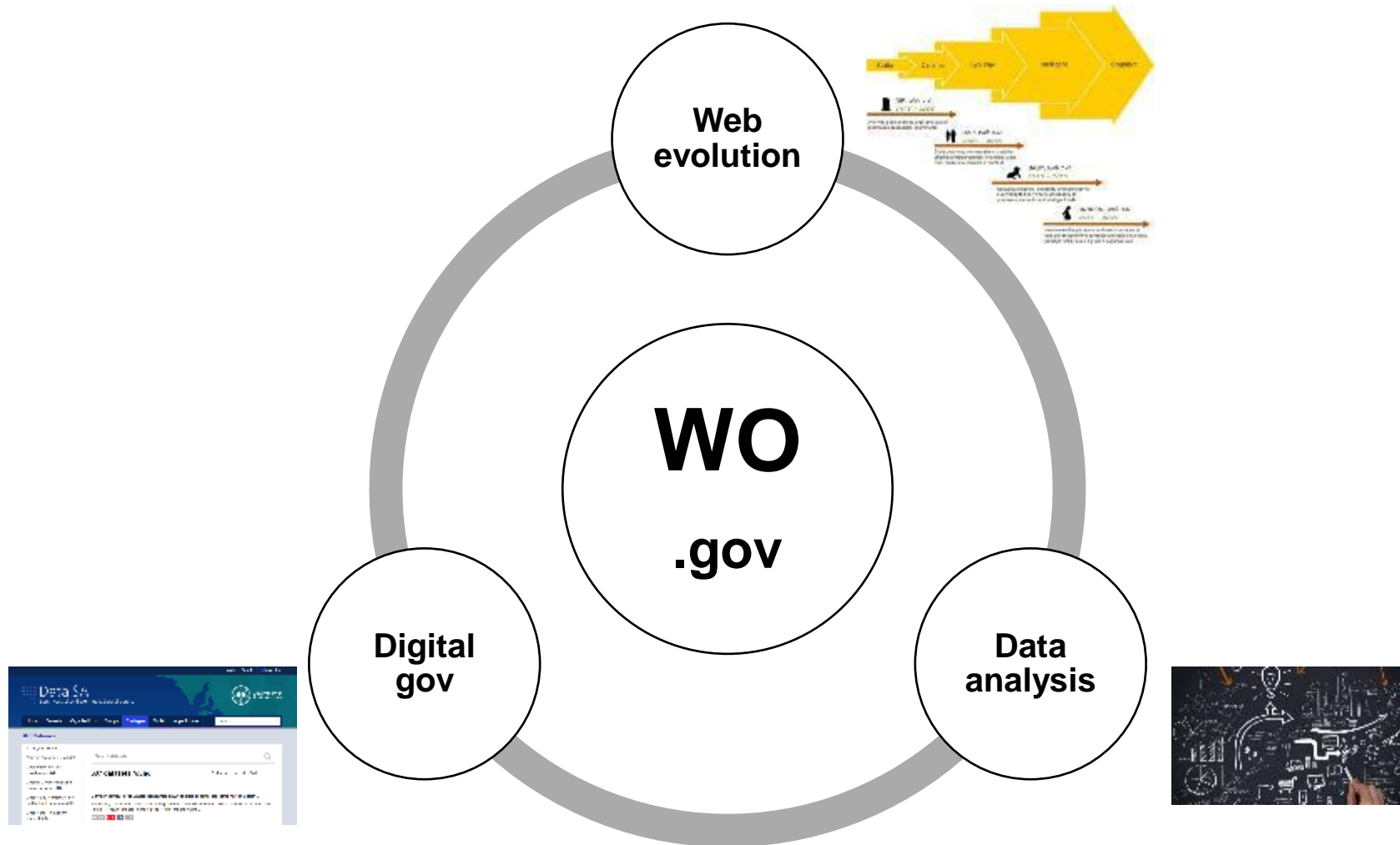
# Towards a Web Observatory for the South Australian Government

Wolfgang Mayer

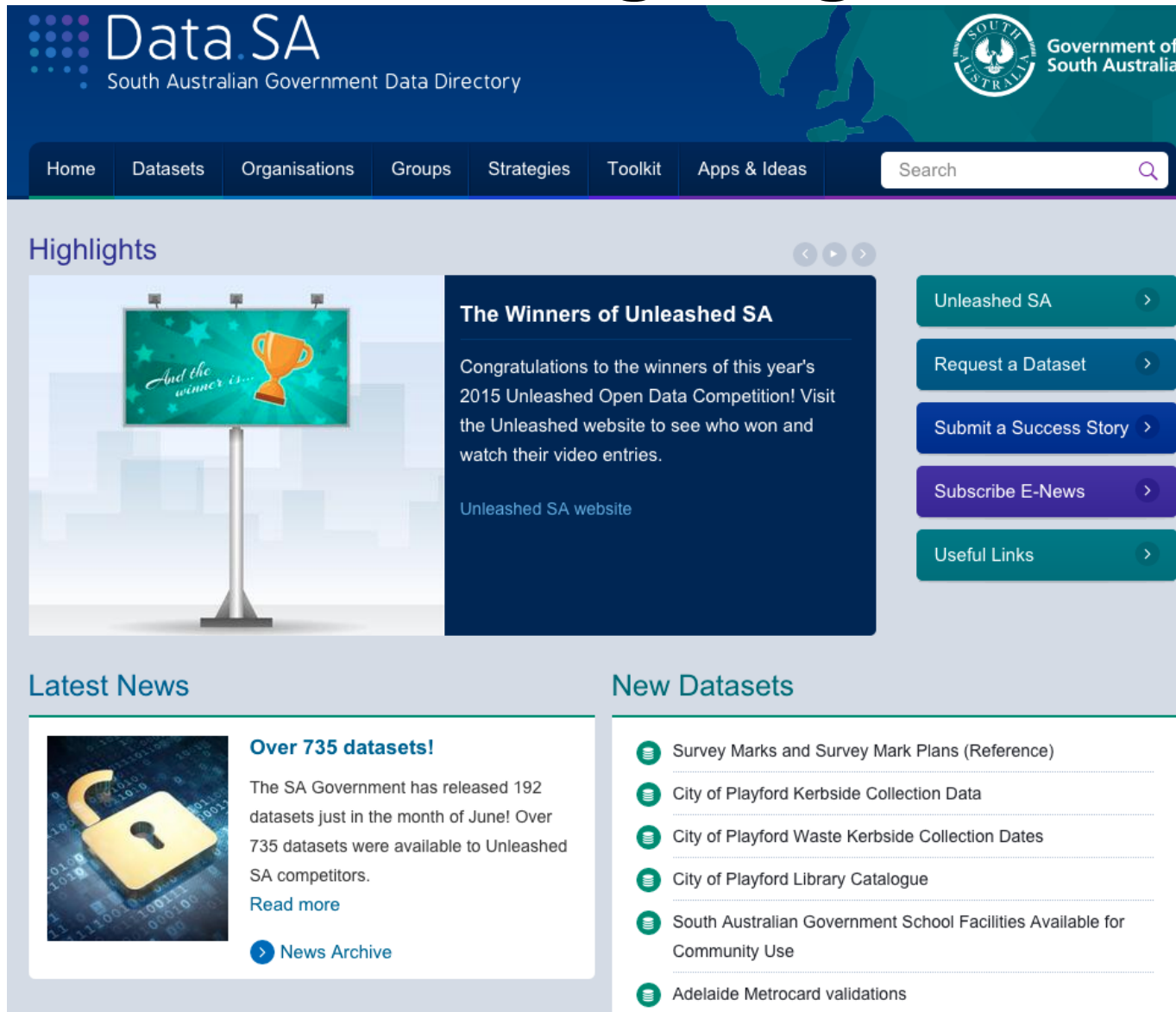
University of South Australia

[wolfgang.mayer@unisa.edu.au](mailto:wolfgang.mayer@unisa.edu.au)

# A government web observatory



# The trend of digital governments



The screenshot shows the Data.SA website, which is the South Australian Government Data Directory. The header features the Data.SA logo, the South Australian Government crest, and a navigation menu with links to Home, Datasets, Organisations, Groups, Strategies, Toolkit, and Apps & Ideas. A search bar is also present. The main content area is divided into sections: Highlights, Latest News, and New Datasets. The Highlights section features a banner for 'The Winners of Unleashed SA' with a trophy icon and a congratulatory message. The Latest News section highlights that over 735 datasets were released in June. The New Datasets section lists several recent releases, including Survey Marks and Survey Mark Plans, City of Playford Kerbside Collection Data, City of Playford Waste Kerbside Collection Dates, City of Playford Library Catalogue, South Australian Government School Facilities Available for Community Use, and Adelaide Metrocard validations.

**Data.SA**  
South Australian Government Data Directory

Home Datasets Organisations Groups Strategies Toolkit Apps & Ideas Search

### Highlights

**The Winners of Unleashed SA**

Congratulations to the winners of this year's 2015 Unleashed Open Data Competition! Visit the Unleashed website to see who won and watch their video entries.

[Unleashed SA website](#)

[Unleashed SA](#)

[Request a Dataset](#)

[Submit a Success Story](#)

[Subscribe E-News](#)

[Useful Links](#)

### Latest News

**Over 735 datasets!**

The SA Government has released 192 datasets just in the month of June! Over 735 datasets were available to Unleashed SA competitors.

[Read more](#)

[News Archive](#)

### New Datasets

- Survey Marks and Survey Mark Plans (Reference)
- City of Playford Kerbside Collection Data
- City of Playford Waste Kerbside Collection Dates
- City of Playford Library Catalogue
- South Australian Government School Facilities Available for Community Use
- Adelaide Metrocard validations

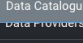


<https://data.sa.gov.au>

# However...

**Employees in GSG by Age, Appointment Type and Gender as at December 2014**

Age Group (yrs)	Appointment Type															% of Total Public Sector 2014
	Ongoing			Contract						Total						
				Short Term			Long Term									
	Male	Female	Total	Male	Female	Total	Male	Female	Total	Male	% of all Males	Female	% of all Females	Total	% of Total	
15-19	0	1	1	0	3	3	0	1	1	0	0.0%	5	0.7%	5	0.5%	
20-24	7	8	15	3	14	17	0	0	0	10	2.7%	22	3.1%	32	3.0%	
25-29	23	39	62	5	22	27	0	3	3	28	7.5%	64	9.1%	92	8.5%	
30-34	34	65	99	8	6	14	0	2	2	42	11.3%	73	10.3%	115	10.7%	
35-39	39	71	110	4	12	16	3	3	6	46	12.4%	86	12.2%	132	12.2%	
40-44	48	79	127	6	12	18	2	4	6	56	15.1%	95	13.4%	151	14.0%	
45-49	42	92	134	3	10	13	7	2	9	52	14.0%	104	14.7%	156	14.5%	
50-54	37	84	121	1	4	5	2	2	4	40	10.8%	90	12.7%	130	12.3%	
55-59	49	70	119	2	4	6	4	2	6	55	14.8%	76	10.7%	131	12.4%	
60-64	33	69	102	0	0	0	1	3	4	34	9.2%	72	10.2%	106	9.9%	
65+	8	20	28	0	0	0	0	0	0	8	2.2%	20	2.8%	28	2.7%	
Total	320	598	918	32	87	119	19	22	41	371	100%	707	100%	1078	100%	



NATIONAL

MAP

BETA

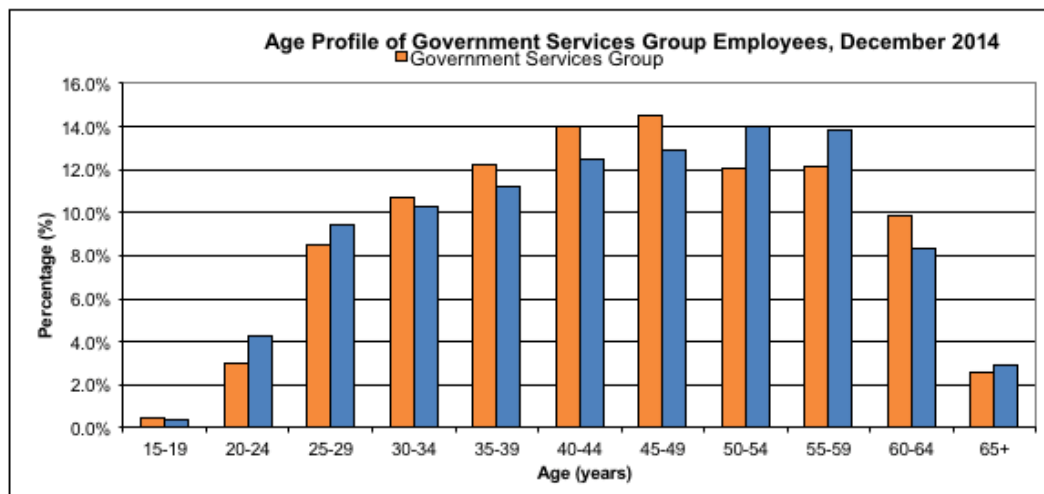
Data Catalogue

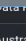
Now Viewing

Data Providers

Australian Bureau of Statistics


ACT Government





NATIONAL  
MAP

BETA



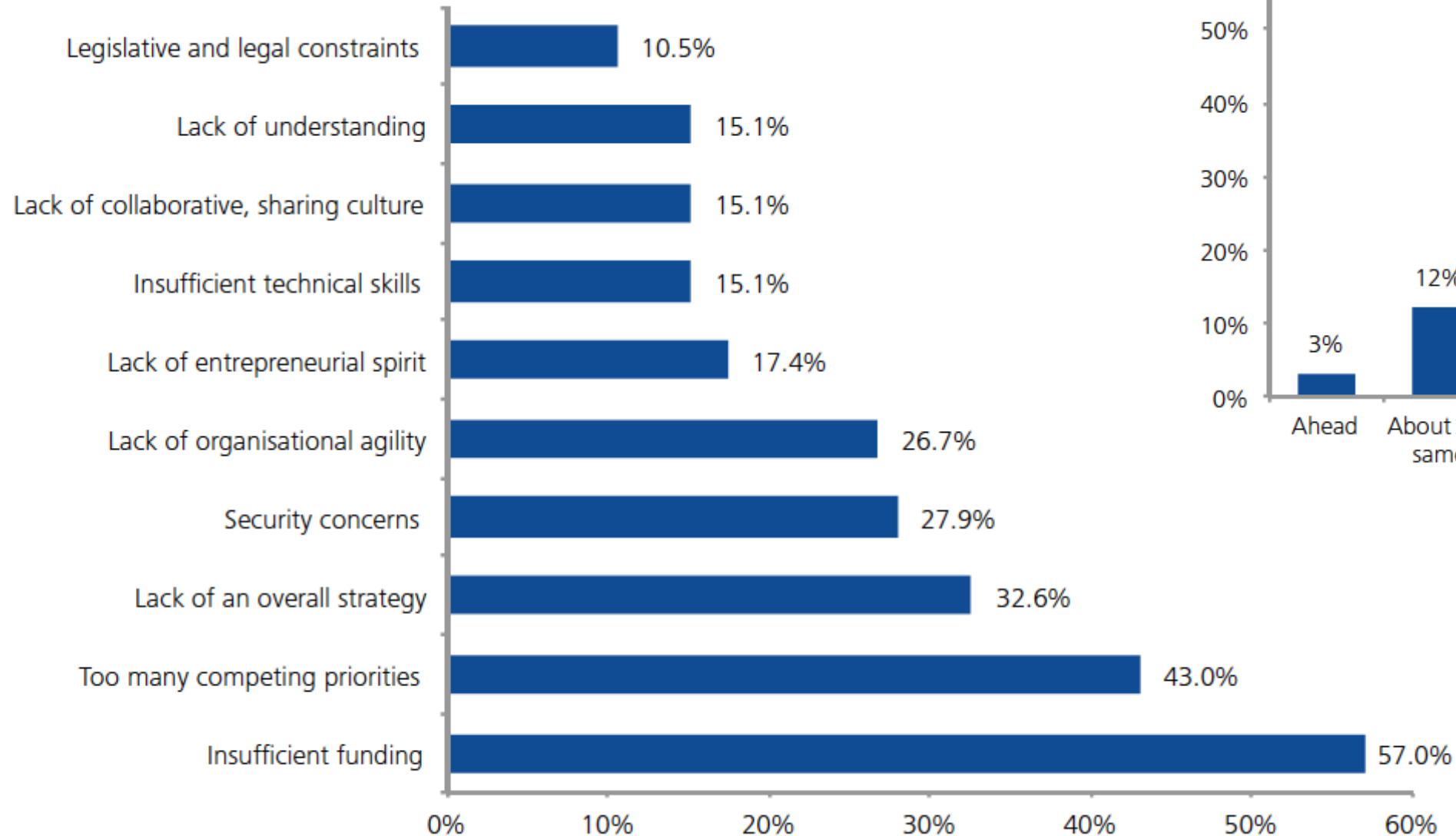
Data Catalogue
Now Viewing
Search

Data Providers

- Australian Bureau of Statistics (BETA)
- ACT Government
- New South Wales Government
- Northern Territory Government
- Queensland Government
- South Australian Government (BETA)
- ☐ Aquatic Reserves
  - ▶ Arts, culture & history
  - ▶ Business, industry and trade
  - ▶ Community information and citizen services
  - ▶ Emergency and safety
  - ☒ Road Crashes in SA
    - ▶ Government reporting and policy
    - ▶ Housing, land, planning and infrastructure
    - ▶ Sports and Recreation
    - ▶ Transport, travel and motoring
    - ▶ Water, energy, resources, environment and science
- Tasmanian Government
- Victorian Government

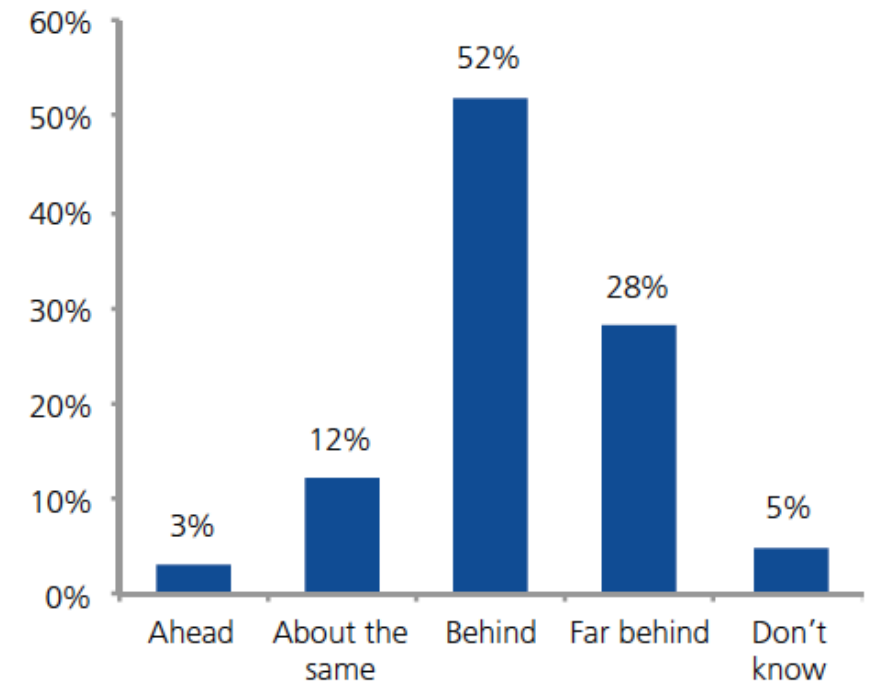


# Barriers



Deloitte (2015) "The South Australian Digital Landscape Report"

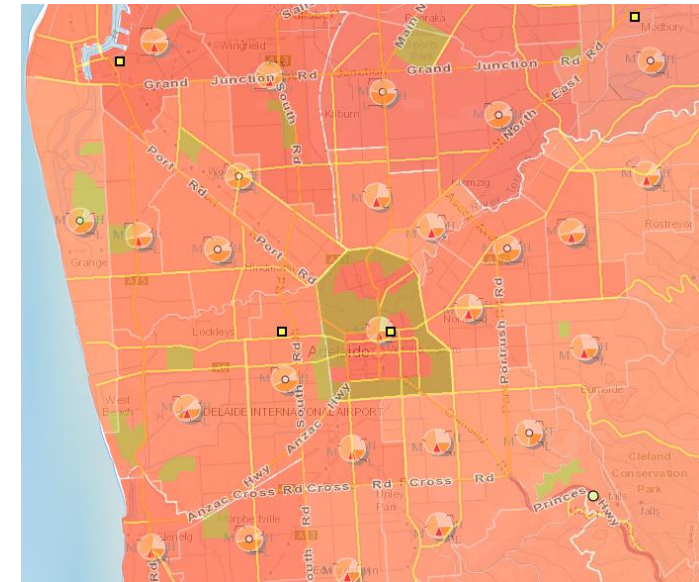
Figure 14: How do you think your organisation's digital capabilities compare to the private sector?





# Adelaide Observatory Progress

- Data sets about locations, facilities, demographics are readily available
- Proprietary data sets are needed
  - Property register
  - Healthcare records
  - Transportation
  - Charities
  - Social networks (e.g. twitter)
  - ...
- Visualisation proof of concept



# Challenges ahead

- Bringing together public and private data sets and expertise
- End user data curation, analytics and visualisations
- Addressing technical, legal, and administrative barriers for data publishing and creation of applications
- Digital literacy