



NEWTON INSTITUTIONAL LINKS - KLN 2020 INDONESIA GUIDELINES (COMPLEMENTARY TO GLOBAL GUIDELINE)

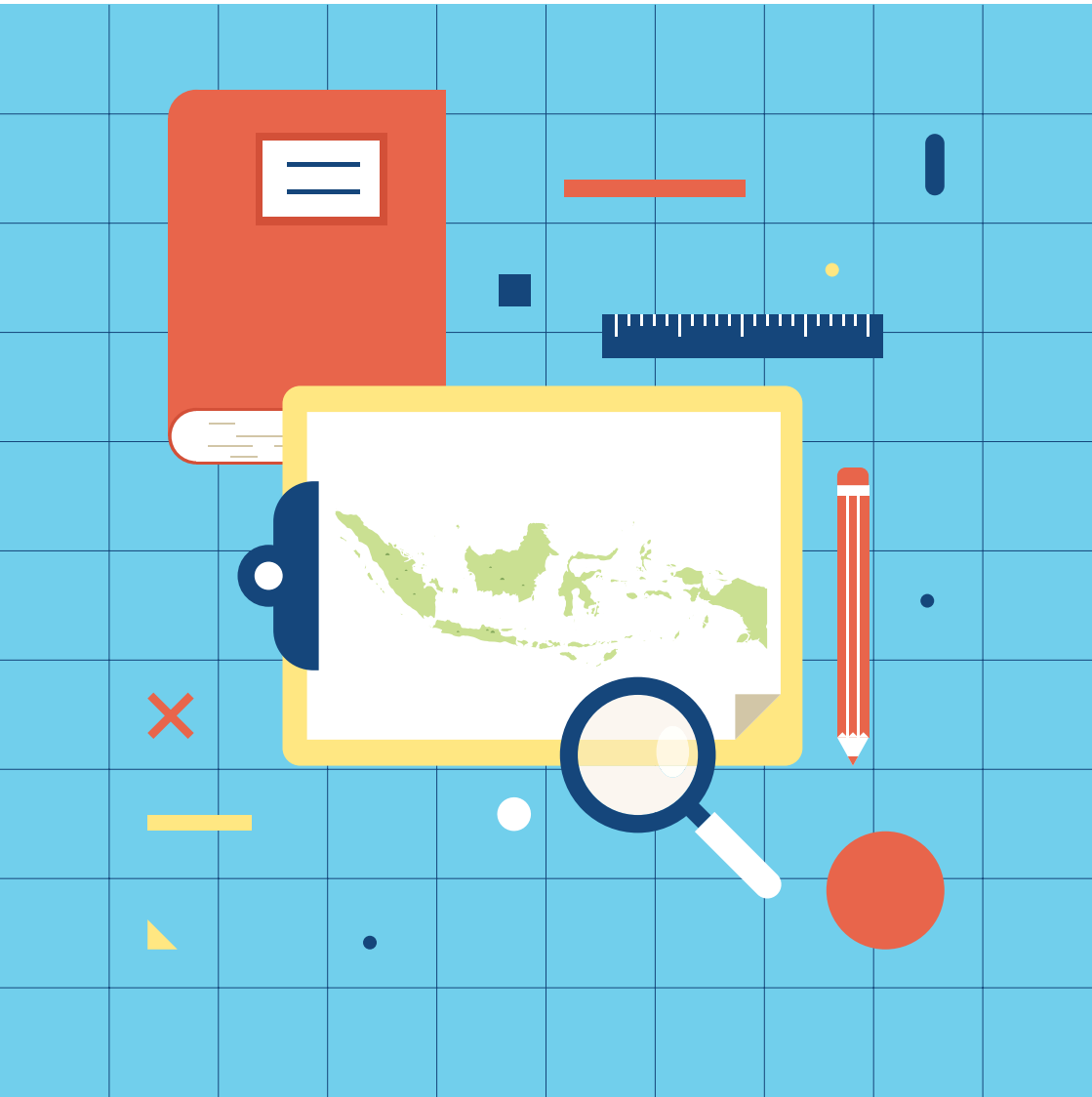


Table of Contents

Newton Institutional Links – KLN (IL): Introduction	3
Aligning Newton Institutional Links – KLN to Ristek-BRIN’s Guidebook Version 12	4
Basic Research and Applied Research	5
Eligibility – Indonesia Principal Investigator (ID PI)	7
Proposing Indonesia Side of Budget	8
Finding a UK Partner	9
Application Process	10
Post-Award Process	12
Monitoring and Evaluation	12
Do I Need to Present An MoU When Applying to This Grant?	13
Foreign Research Permit	13
Contact	14

A. Introduction



This guideline was created to assist applicants to Indonesia specific Newton Institutional Links call. It is complementing the Newton general guidelines and not to replace it.



Important

Where there are differences in information from UK general guidelines, you should adhere to this document.



Newton Institutional Links – KLN (IL)

IL is the joint research funding between newton Institutional Links and program Kerjasama Luar Negeri under Ministry of Research and Technology/ National Research and Innovation Agency Republic of Indonesia (Ristek-BRIN). IL is a platform for UK and Indonesia researchers to work together and maximising researcher’s productivity, activities can include but not limited to, setting up new research centres, conducting joint research, creation of new inventions while strengthening collaborations with UK counterpart. The fund aims to contribute in solving Indonesia’s challenges on social and economic. We’d like to invite driven and productive researchers to take benefit from the funding.



Joint Funding : How does it work?

Newton Fund will disburse funds to UK university and Ristek-BRIN will disburse to Indonesia university.



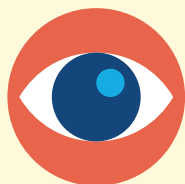
Duration

Multi-years up to 2 years

B. Aligning Newton Institutional Links – KLN to Ristek-BRIN's Guidebook Version 12

Ristek-BRIN is Newton Fund's national partner for Newton Institutional Links – KLN. Together with Newton Fund, Ristek-BRIN provides match funding to this joint initiative. Ristek-BRIN has been implementing output-based research funding since 2016, this is an attempt to reduce administrative workload for Indonesia principal investigators.

All Research activities contracted by Ristek-BRIN are regulated by law, this includes the process of research budgeting. The budget size of each topic is linked to output-based cost standard/*Standar Biaya Keluaran (SBK)*, issued by Ministry of Finance of Republic of Indonesia (MoF). This scheme ties with all arrangement regulated in **Buku Panduan Penelitian Edisi 12 or Ristek-BRIN's guidebook version 12**, specifically to *Penelitian Dasar* (Basic Research) and *Penelitian Terapan* (Applied Research). Once grants recipients are selected, Newton Fund will disburse UK side of budget to UK University and Ristek-BRIN will disburse Indonesia side of budget to Indonesia university.



1. Basic Research and Applied Research

Basic Research

Research focuses on producing basic principle of technology, concept formulation or application of technology, functional proof of concept and/or vital characteristics analytically and experimentally.



Technology Readiness Level

1-3

Expected Output

- minimum one article in reputable database indexed-international journal
- minimum one research output book that has an International Standard Book Number (ISBN); or
- minimum one proceeding article in reputable database indexed – international journal
- minimum three book chapter in reputable database indexed – international journal



Budget Size

Budget should be in accordance to government output cost standard (SBK) under *Penelitian Dasar*. Please see Annex 1 for Output-Based Cost Standard.





Applied Research

Research focuses on finding solutions on challenges occurs in society, industry, and government as a continuation from basic research. Applied research is a research model aims to create innovation and developing science & technology.



Technology Readiness Level

4–6



Expected Output

- minimum one science & technology output for example methods, blue print, prototype, systems, policy, model, or fits-for-purposes technology that protected by Intellectual Property Rights in year one; and
- records of results of products tests, prototype, policy or arts performance in year two



Budget Size

Budget should be in accordance to government output cost standard (SBK) under *Penelitian Terapan*. Please see Annex 1 for Output-Based Cost Standard.

2. Eligibility – Indonesia Principal Investigator (ID PI)

ID PI should be a permanent lecturer holding *Nomor Induk Dosen Nasional (NIDN)* or *Nomor Induk Dosen Khusus (NIDK)*.

For Basic Research

ID PI holds PhD degree and at least at the post of expert assistant (*asisten ahli*) or beyond

ID PI has at least two (2) articles published in reputable indexed database and/or accredited national journal as first author or corresponding author

Research team consist of 1–2 person

For Applied Research

ID PI holds PhD degree and at least at the post of expert assistant (*asisten ahli*) or beyond

ID PI has at least two (2) articles published in reputable indexed database and/or accredited national journal as first author or corresponding author, or minimum has 1 registered IPR

Research team consists of 1–2 person



3. Proposing Indonesia Side of Budget

This section provides a reference for applicants during development of budget for IL application. Please note that the approved final budget can be varied based on Ristek-BRIN evaluation.

When proposing the budget in the application, you will be required to complete a spreadsheet detailing one column for UK side budget and Indonesia side budget. There are two options to find your figures, by using the TRL Calculator which can be found at our website <http://bit.ly/newtonfundIL> under the Downloads section or by following the steps below:



Step 1 Identify joint research output with your partners



Step 2 Check in Annex 2 about Technology Readiness Level

- Check table that suits your topics the most (engineering, agriculture, etc)
- Check in which level your planned research outputs are
- If your TRL level falls between level 1-3, that means your research is classified as Basic Research
- If your TRL level falls between 4-6, that means your research is classified as Applied Research



Step 3 Check back to Annex 1 about output-based cost standard (SBK)



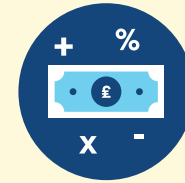
Step 4 Check line that suits your research topics the most



Step 5 Check figures under basic research or applied research (please see point B above)



Step 6 By now you should be able to identify your budget proposal.



Illustration

Proposal research topic : Social Humanities, Cultural, Arts & Education on Domestic Field Research (large scale)
Agreed output includes policy paper

Budget planning calculation:

- Because the output includes policy paper, it classified as applied research
- Search in Annex 1 – Output-Based Unit Cost → Applied Research → Social Humanities, Cultural Arts, Education on Domestic Field Research (large scale)
- The budget size for Indonesia side based on topic field in output-based cost standard (SBK) is IDR 675,000,000
- Your UK partner can propose up to GBP 80,000 and you can propose IDR 675,000,000 for Indonesia budget
- Convert IDR to GBP. For example, exchange rate from IDR to GBP is IDR 18,300.
- $IDR\ 675,000,000 / IDR\ 18,300 = GBP\ 36,885$ per year
- UK budget proposal + Indonesia budget proposal = Total budget proposal
- $GBP\ 80,000 + (GBP\ 36,885 \times 2\ years) = GBP\ 153,770$
- The total budget proposal for 2 years research is GBP 153,770



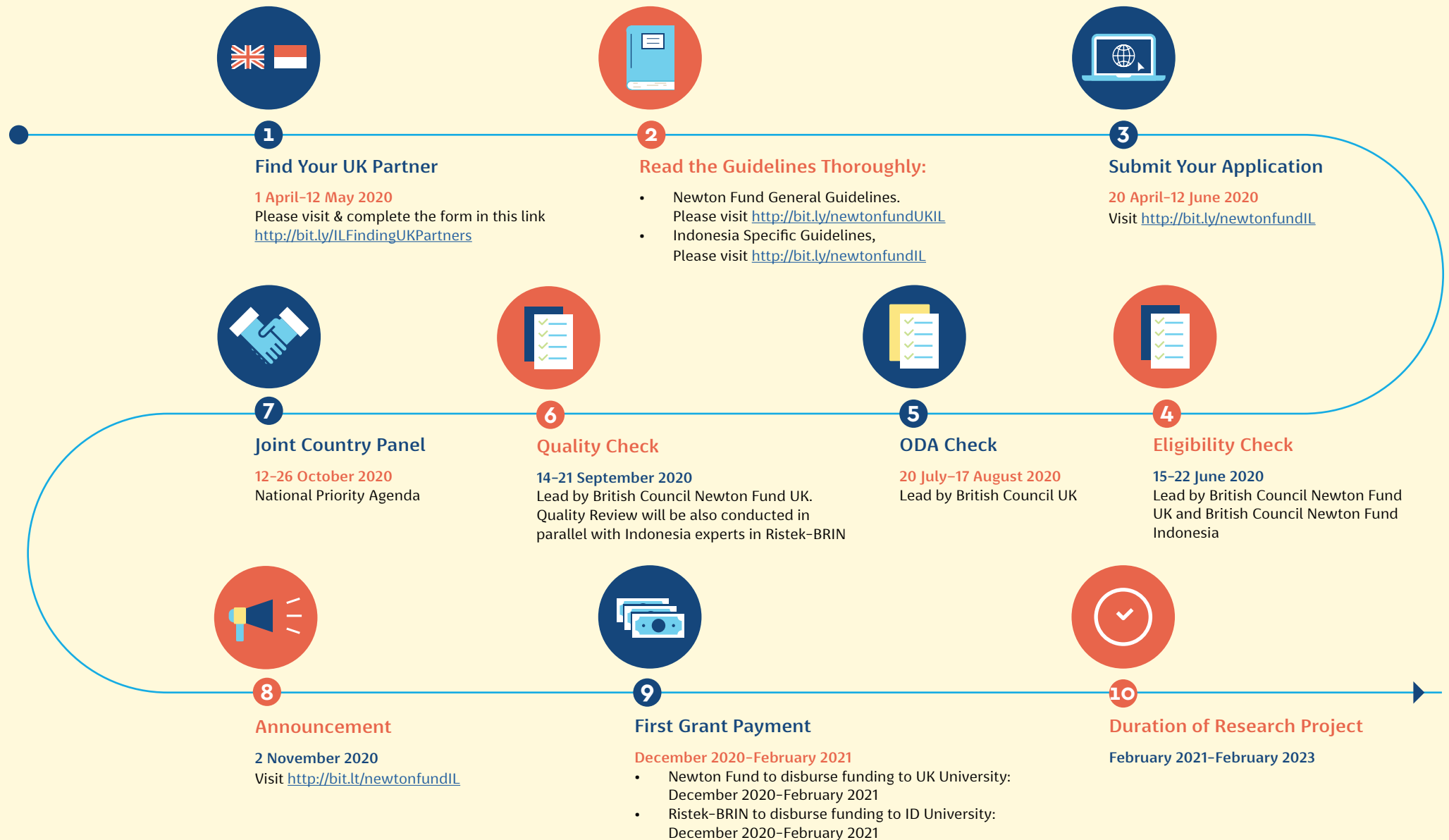
C. Finding A UK Partner

Our partner, Universities UK, facilitates new partnership between Indonesia and UK university.

Please follow steps through this link to get support:
<http://bit.ly/ILFindingUKPartners>

You will be required to submit CV that should contain information on research interests and proposed topics for collaboration.

D. Application Process





E. Post-Award Process

Successful applicant will be notified by British Council UK to UK PI.

2022, and Final payment will be paid in March 2023.

Process for Indonesia University will be led by Ristek-BRIN.

Indonesia University: Indonesia PI will need to follow process through SIMLITABNAS, this includes submitting granted proposal to SIMLITABNAS. The two years research contract will be divided into yearly scheme. Every year there will be two payments made; First payment in March and Final payment in December.

Once awarded, arrangement of grants will be below:

UK University: British Council UK will process grants agreement, payment proportion : 60-20-20. The first payment will be paid in January-March 2021, Second payment will be paid in October

F. Monitoring and Evaluation

British Council

Ristek-BRIN

Interim Narrative Report (October 2021) through Research Fish

Progress Research Output, Daily Notes on research activities through SIMLITABNAS (Ristek-BRIN membership website)

Interim Financial Report (October 2021) to be sent to British Council

Year End Report (December 2021) through SIMLITABNAS

JOINT MONITORING
On-site monitoring visit to university/ project (September 2021-February 2022)

JOINT MONITORING
On-site monitoring visit to university/ project (September 2021-February 2022)

Final Narrative Report (January 2022) through Research Fish

Indonesian PI will be asked to provide yearly report to enter 2nd year.

Final Financial Report (January 2022) to be sent to British Council



G. Do I Need to Present An MoU When Applying to This Grant?

Should you be granted the award, we require the project to prepare Letter of Intent or MoU between parties. This is to facilitate the implementation of the research project and Foreign Research Permit to Indonesia.



H. Foreign Research Permit

Researcher(s) from other countries are welcome to carry out research in Indonesia. In accordance with the Indonesian regulation (Govt. Regulation no. 41/2006), all foreign researchers doing research activities in Indonesia must obtain an official permit from the Indonesian authority in advanced. Please visit this link for official website of Foreign Research Permit to Indonesia: <https://frp.ristekdikti.go.id/>

I. Contact





Design by  **HEIMLO**

